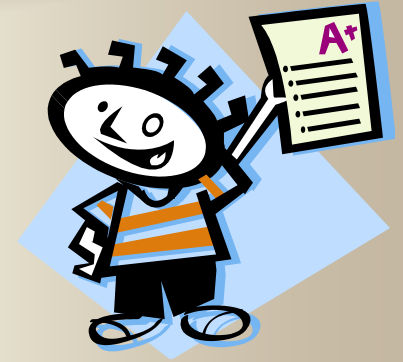


HOW TO CALCULATE GPA?



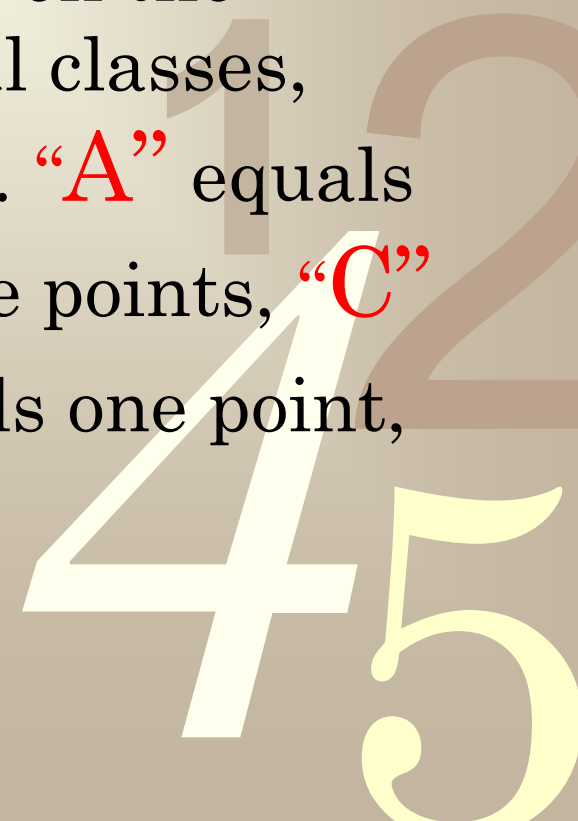
0011 0010 1010 1101 0001 0100

What is GPA??



0011 0010 1010 1101 0001 0100 1011

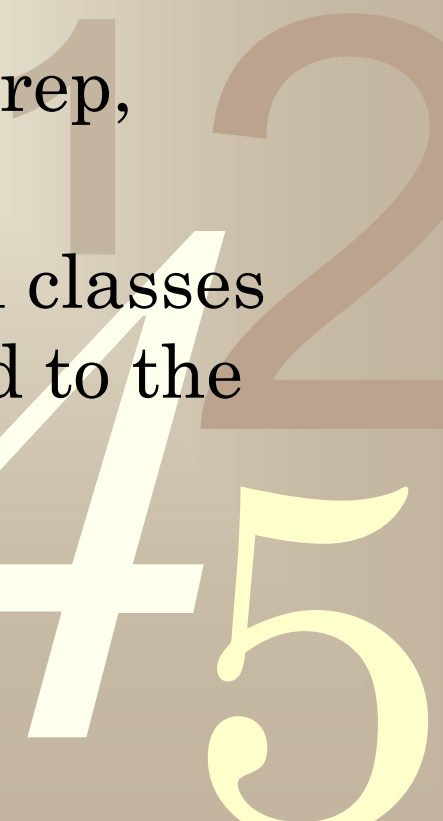
- **GPA** or **G**rade **P**oint **A**verage
 - The GPA is calculated based on the grades obtained in individual classes, usually on a four-point scale. “A” equals four points, “B” equals three points, “C” equals two points, “D” equals one point, and “F” equals zero points.
 - Example : GPA = 3.67





Weighted vs. Unweighted GPA

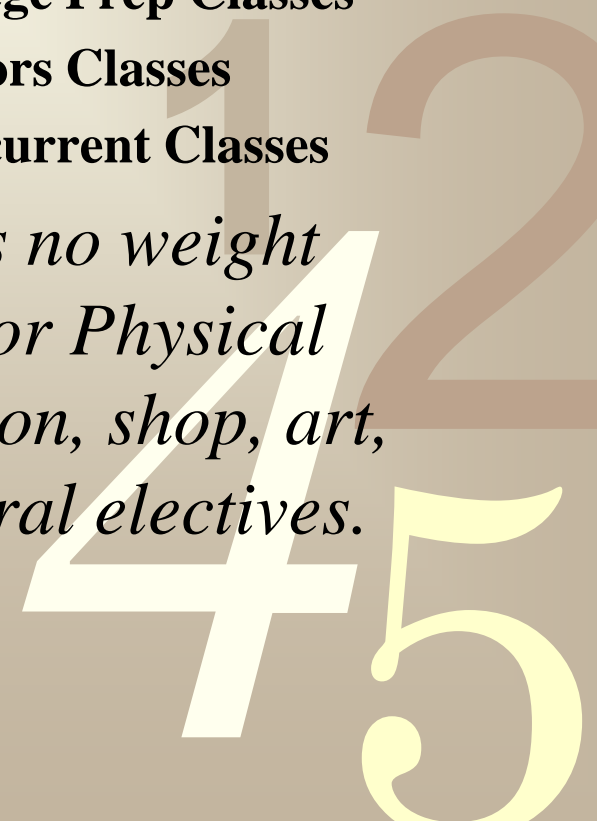
- **Weighted GPA** – Allows courses designated as weighted to count for more points and therefore your weighted GPA is higher than your unweighted GPA. Weighted courses include College Prep, Honors, Concurrent, Career levels.
- **Unweighted GPA** - Considers all classes as the same, and no weight is added to the courses.
- Example – Weighted GPA 3.67
Unweighted GPA 3.21



Grading Scale 2009-10

Letter	Numeric	GPA	Weight Added
A+	98-100	4.0	.0 General classes
A	95-97	4.0	.25 Career classes
A-	92-94	3.67	.50 College Prep Classes
B+	89-91	3.33	.75 Honors Classes
B	86-88	3.0	1.0 Concurrent Classes
B-	83-85	2.67	
C+	80-82	2.33	
C	77-79	2.0	
C-	74-76	1.67	
D+	71-73	1.33	
D	68-70	1.0	
D-	65-67	0.67	
F	0-64	0	

***There is no weight added for Physical Education, shop, art, or general electives.*
**



How to Calculate Weighted GPA?

0011 0010 1010 1101 0001 0100 1011



STEP 1:



0011 0010 1010 1101 0001 0100 1011

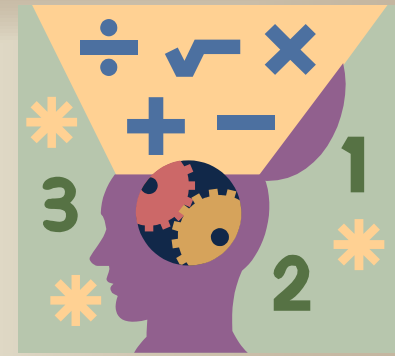
EXAMPLE – JOHN SMITH

Grades

ENGLISH 1 - H	90
SPANISH I-CP	93
PE/H BIO LAB	86
ALGEBRA 1 CP	86
GEOMETRY - H	86
BIOLOGY /LAB(H)	82
WORLD HIST.-H	90
GRAPHIC DESIGN	92



STEP 2:



CALCULATED QUALITY POINTS

= GPA EQUIVALENT OF GRADE + COURSE WEIGHT

	Grade	Quality Points
ENGLISH 1 - H	90	$3.33 + .75 = 4.08$
SPANISH I-CP	93	$3.67 + .50 = 4.16$
PE/H BIO LAB	86	$3.00 + 0 = 3.00$
ALGEBRA 1 CP	86	$3.00 + .50 = 3.50$
GEOMETRY - H	86	$3.00 + .75 = 3.75$
BIOLOGY /LAB(H)	82	$2.33 + .75 = 3.08$
WORLD HIST.-H	90	$3.33 + .75 = 4.08$
GRAPHIC DESIGN	92	$3.67 + 0 = 3.67$





STEP 3:

0011 0010 1010 1101 0001 0100 1011

MULTIPLY QUALITY POINTS \times CREDITS EARNED

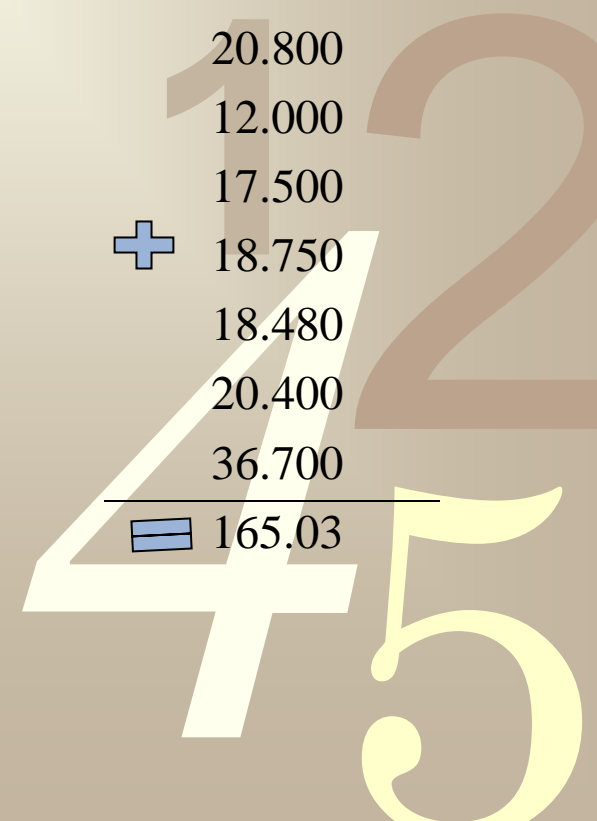
	Grade	Quality Points	\times	Credits Earned	= Calculated QP
ENGLISH 1 – H	90	4.080		5.000	20.400
SPANISH I-CP	93	4.160		5.000	20.800
PE/H BIO LAB	86	3.000		4.000	12.000
ALGEBRA 1 CP	86	3.500		5.000	17.500
GEOMETRY – H	86	3.750		5.000	18.750
BIOLOGY /LAB(H)	82	3.080		6.000	18.480
WORLD HIST.-H	90	4.080		5.000	20.400
GRAPHIC DESIGN	92	3.670		10.000	36.700

STEP 4:

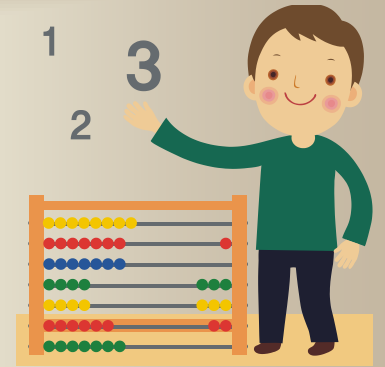


Add up Credits Earned Column & Add up Calculated QP Columns

	Grade	Quality Points	×	Credits Earned	=	Calculated QP
ENGLISH 1 – H	90	4.080		5.000		20.400
SPANISH I-CP	93	4.160		5.000		20.800
PE/H BIO LAB	86	3.000		4.000		12.000
ALGEBRA 1 CP	86	3.500		5.000		17.500
GEOMETRY – H	86	3.750	+	5.000	+	18.750
BIOLOGY/LAB H	82	3.080		6.000		18.480
WORLD HIST-H	90	4.080		5.000		20.400
GRAPHIC DESIGN	92	3.670		10.000		36.700
			=	45.00	=	165.03



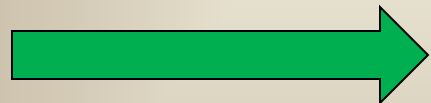
STEP: 5



0011 0010 1010 1101 0001 0100 1011

Divide Calculated Quality Points(QP) by
Credits Earned

Calculated QP/ Credits Earned

 $165.03 \div 45 = 3.667$

This is the weighted GPA

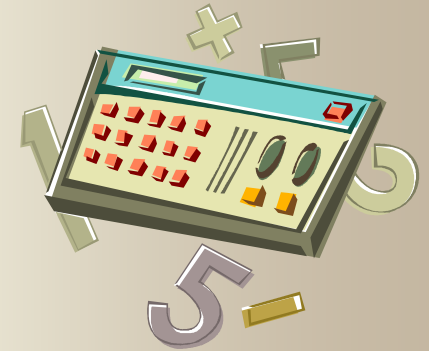


How to Calculate Unweighted GPA?



0011 0010 1010 1101 0001 01

STEP 1:



0011 0010 1010 1101 0001 0100 1011

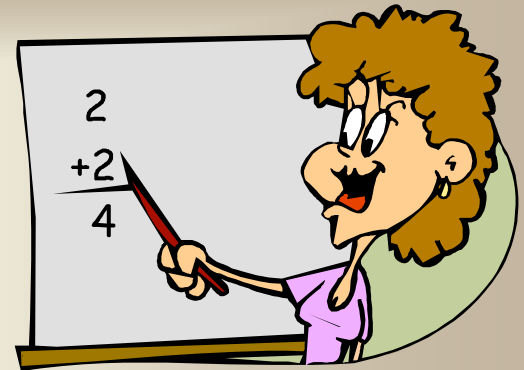
EXAMPLE – JOHN SMITH

Grades

ENGLISH 1 - H	90
SPANISH I-CP	93
PE/H BIO LAB	86
ALGEBRA 1 CP	86
GEOMETRY - H	86
BIOLOGY /LAB(H)	82
WORLD HIST.-H	90
GRAPHIC DESIGN	92



STEP 2



0011 0010 1010 1101 0001 0100 1011

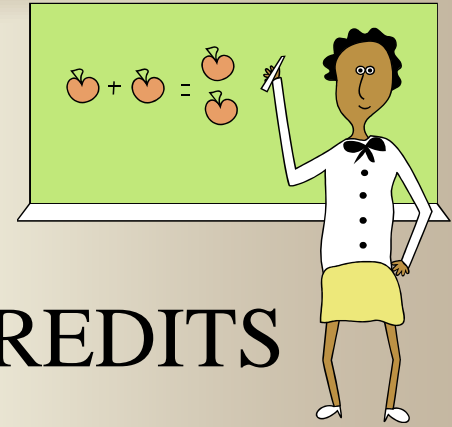
CALCULATE QUALITY POINTS

= GPA EQUIVALENT OF GRADE

	Grade	Quality Points
ENGLISH 1 - H	90	3.33
SPANISH I-CP	93	3.67
PE/H BIO LAB	86	3.00
ALGEBRA 1 CP	86	3.00
GEOMETRY - H	86	3.00
BIOLOGY /LAB(H)	82	2.33
WORLD HIST.-H	90	3.33
GRAPHIC DESIGN	92	3.67

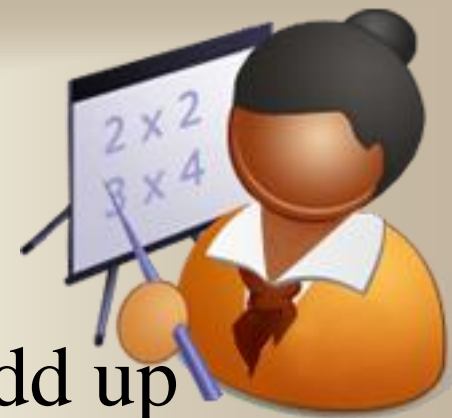


STEP 3



MULTIPLY QUALITY POINTS \times CREDITS EARNED

	Grade	Quality Points \times	Credits Earned $=$	Calculated QP
ENGLISH 1 – H	90	3.33	5.000	16.65
SPANISH I-CP	93	3.67	5.000	18.35
PE/H BIO LAB	86	3.00	4.000	12.00
ALGEBRA 1 CP	86	3.00	5.000	15.00
GEOMETRY – H	86	3.00	5.000	15.00
BIOLOGY /LAB(H)	82	2.33	6.000	13.98
WORLD HIST.-H	90	3.33	5.000	16.65
GRAPHIC DESIGN	92	3.67	10.000	36.700

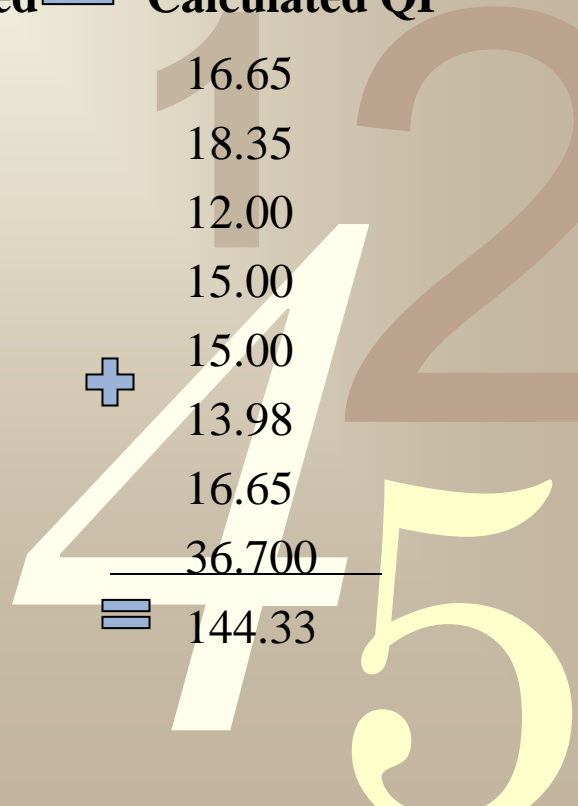


STEP 4

0011 0010 1010 1101 0001 0

- Add up Credits Earned Column & Add up Calculated QP Columns

	Grade	Quality Points \times	Credits Earned $=$	Calculated QP
ENGLISH 1 – H	90	3.33	5.000	16.65
SPANISH I-CP	93	3.67	5.000	18.35
PE/H BIO LAB	86	3.00	4.000	12.00
ALGEBRA 1 CP	86	3.00	5.000	15.00
GEOMETRY – H	86	3.00	5.000	15.00
BIOLOGY /LAB(H)	82	2.33	6.000	13.98
WORLD HIST.-H	90	3.33	5.000	16.65
GRAPHIC DESIGN	92	3.67	5.000	18.35
			<hr/> 10.000	<hr/> 36.700
			$=$ 45.00	$=$ 144.33

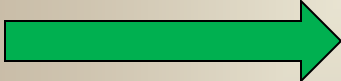


STEP 5



0011 0010 1010 1101 0001 0100 1011
Divide Calculated Quality Points(QP) by
Credits Earned

Calculated QP/ Credits Earned

 $144.33 \div 45 = 3.207$

This is the unweighted GPA

